



 Ascension Saint Thomas
Rutherford Foundation

Fiscal Year / **2021-2022** **IMPACT REPORT**

*Serving our ministry with
compassion for struggling
patients, consideration for our
caregivers and a commitment
to superb patient care.*



Ascension Saint Thomas Rutherford Foundation

Meaning of **Ascension**

Our Historic Sponsors chose the name “Ascension” because it invites us all to share in the healing ministry and implies hope and growth. The name references an account in the Christian scriptures of when Jesus ascends to heaven and places his healing ministry into the hands of that early community, sending them forth to be vessels and instruments of transformation. The Ascension logo is the primary symbol of our organization. It unifies us across businesses and geographies, and signals to the world who we are and what we stand for. Our logo reflects our Mission. Used consistently, it raises awareness and recognition of our commitment to and impact on innovative healthcare services.

TABLE OF CONTENTS

PAGE 4

Letter from the Board President

PAGE 14

Advancing Excellent Healthcare

PAGE 24

Events

PAGE 6

Your Gift Matters

PAGE 18

Support of Our Caregivers

PAGE 31

Donor Listing

PAGE 8

Care For All Patients

PAGE 22

Guardian Angels

PAGE 36

ASTRH By the Numbers

OUR MISSION

Rooted in the loving ministry of Jesus as healer, we commit ourselves to serving all persons with special attention to those who are poor and vulnerable. Our Catholic health ministry is dedicated to spiritually centered, holistic care, which sustains and improves the health of individuals and communities. We are advocates for a compassionate and just society through our actions and our words.

OUR PURPOSE

The role of the Ascension Saint Thomas Rutherford Foundation is to support the mission of Ascension Saint Thomas Rutherford. The Foundation serves the people and system needs throughout Middle Tennessee and the Ascension Saint Thomas network of care. We embrace the philosophy and mission of healing and service to those who are struggling as the fundamental purpose of our ministry.

CARE FOR ALL PATIENTS

The Foundation is here to bridge the gap for those patients who do not have the financial resources to continue their care after leaving us by offsetting the cost of durable medical equipment, prescription medications and care beyond the bedside.

ADVANCING EXCELLENT HEALTHCARE

All persons deserve the best care available. The Foundation strives to ensure this is possible by supporting technological advancements and facility improvements that enhance the patient experience.

SUPPORT OF OUR CAREGIVERS

The Foundation helps to meet the needs of those who work for our ministry; improving their lives and helping them realize their full potential as an individual and a caregiver. There are many ways the Foundation supports our own, including emergency assistance, educational opportunities, and scholarships.



Meaning of Ascension Colors

The three colors in the symbol were chosen to represent the Christian trinity symbol, with **green representing growth**, **blue for health** and **purple for compassion**. The integration of the “A” in Ascension with the trinity symbol forever links the two and allows us to tell the stories of commitment, compassion and growth of a healthy community.

LETTER FROM THE BOARD PRESIDENT



Newton Molloy
ASTR Foundation President
FY 2020 - FY 2022

The Ascension Saint Thomas Rutherford Foundation strives to support and seeks to help improve the outcome of everyone in our Hospital's care. Through your continued support and the support of our community during these unprecedented times, we have been able to meet the challenge and accomplish our goals. We thank each one of you for what you do for OUR Hospital through the Foundation.

The Covid-19 pandemic persisted throughout 2021 with its new variations of the virus. This again put a tremendous stress on our Hospital, Doctors, Nurses, and Staff. It required new found patience and perseverance to adjust to the changing medical situations as cases spiked, retreated, and then spiked again during the year. In the midst of these challenges, our Hospital Administration has continued to look toward the future of our growing community, medical facilities and the specialties that will be needed as we go forward.

It is in this context, that our Hospital Foundation, our Ambassadors and community supporters have continued to provide support to the Doctors, Nurses and Staff. When our staff is besieged and under pressure your support reminds them that our community cannot do without them and cares a great deal for each one of them and the mission they are fulfilling. They are indeed our Heroes who provide this much needed medical care.

The Ascension Saint Thomas Rutherford Foundation is governed by a volunteer Board of Directors. These dedicated volunteers provide governance and oversight to the organization. We are grateful for their dedication and leadership in support of our mission.

THE BOARD

& FOUNDATION STAFF



Newton Molloy
President



Elizabeth Allen



Sydney Boerner



Dennis Carter, M.D.



Patrick Clark, M.D.



Debbie Cope



Dave Davis



Vicki Eastham
**Trustees
Committee Chair**



Lady Hamilton



Ashley Holloway



Emily Hunton



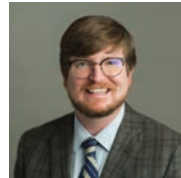
Jamie Jackson



David Jones



Caroline Lampley



David LaRoche
Grants Committee Chair



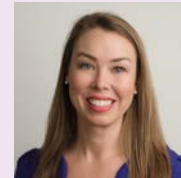
Matt Layman, M.D.



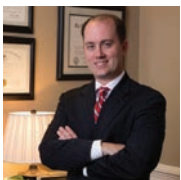
Libby Long, M.D.



Patty Marschel



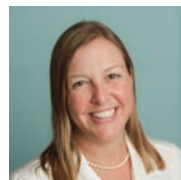
Virginia DeJean
Director



Ben Parsley
**Development
Committee Chair**



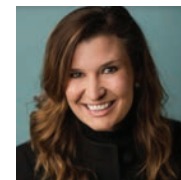
Shannon Parsons



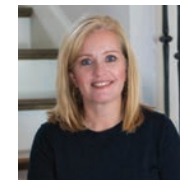
Mary Elam Polk



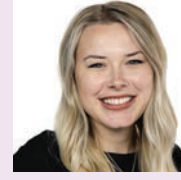
Arundati Ramesh, M.D.



Ann Elizabeth Rucker



Suzanne Slayton



Hayley McCracken
Development Coordinator



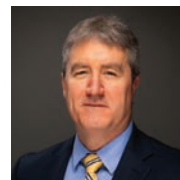
Joyce Taylor



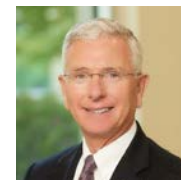
Mike Ussery



Jimmy Wheeler



Jeff Younginer



Gordon B. Ferguson
President & CEO



Kimberly Hopkins
Administrative Assistant

YOUR GIFT MATTERS

These stats reflect FY21 and FY22 unless otherwise noted

CONTRIBUTIONS



Total Net Contributions - **\$5,610,174.21**
1,146 donors

GRANTED



Total Granted Out - **\$3,420,975.63**
For a total Number of **353 grants**

SCHOLARSHIPS



\$20,829.37 FY21 for 12 | **\$28,654.79** FY22 for 22
Total : **\$49,484.16**

OUR MISSION IN MOTION



The Christy-Houston Foundation, ASTHF, ASTRF and the Power of Pink, funded **\$1,500,000** to purchase a second unit and retrofit the existing unit with 3D tomography.

A TIME TO EXCEL CAMPAIGN



Through generous donors in our community, ASTRF granted **3 million dollars** towards our Time to Excel Pledge for the 2021 expansion.

ASSOCIATE GIVING



\$59,203 Given by 291 Associates through the 2021 Associate Giving

CARE FOR ALL PATIENTS

Bridging the gap for those patients who do not have the financial resources to continue their care after leaving us by off-setting the cost of durable medical equipment, prescription medications and care beyond the bedside.

\$899,746.83 in Total Granted Out Funds



CARE FOR ALL PATIENTS FUND LISTING

Compassion for Struggling Patients

Care of the Poor and Sick

Ambassadors Fund/ Monies are raised by the Saint Thomas Rutherford Foundation Ambassadors to fund special projects, such as the Mobile Health Unit and the Saint Louise Clinic.

Cancer Fund/ The Cancer Fund is used to purchase equipment, fund renovations, and support indigent cancer patients.

C.H. Hunt Indigent Patient Care Fund/ This fund assists indigent patients by providing needed medications and medical equipment, usually at the time of discharge.

Lymphedema Fund/ Created in 2004, by Saint Thomas Rutherford Hospital physical therapist Linda Bullard, this fund provides anti-swelling garments for indigent lymphedema patients.

Mobile Health Ministry Fund/ This fund was created to support the operating costs associated with the Saint Thomas Rutherford Mobile Health Ministry.

Dispensary of Hope Fund/ This program is available to help low-income, uninsured individuals get the medications they need. Ascension Saint Thomas Rutherford offers the Dispensary of Hope program through the Ascension Saint Thomas Medical Group's Saint Louise Pharmacy located on North Highland Avenue in Murfreesboro.

Dr. Jim Boerner Nursery-Pediatric Fund/ Created in 1984, this fund serves Labor and Delivery, the Well Baby Nursery and the NICU on the third floor, as well as the Pediatric Unit on the sixth floor. These funds may include provision of specialized care for newborn infants and support for obstetric patients.

Power of Pink - Breast Center Fund/ This fund provides mammograms and breast biopsies for local uninsured, underinsured, and indigent ladies in Rutherford County and surrounding areas. Proceeds from Wine Around the Square benefit this fund.

Renewing Hope Fund/ Created in 2005, this fund was created to aid those in need after a natural disaster.

Saint Joseph Fund/ Created in 2014, by Dr. Liz Rhea, this fund provides for end-of-life needs and expenses for indigent patients at Ascension Saint Thomas Rutherford Hospital.

James P. and Alice R. Burns Saint Louise Clinic Fund/ Created in 2014, this fund was created to support the work of the Saint Louise Clinic and to provide for capital needs. In 2022, the fund was renamed in honor of James P. and Alice R. Burns.

IMPACT OF YOUR SUPPORT IN FY21 & FY22

Your contributions help others when they need it most. Here are a few highlights.

CARE FOR ALL PATIENTS

Our Mission in Motion Mobile Mammography Clinic



Ascension Saint Thomas provides breast cancer screenings and preventive education to women throughout 26 counties in Middle Tennessee. The Mobile Mammography Clinic remains the most effective method of reaching underserved women who face barriers of cost, time, and transportation to access the Hospital's resources. For many women, the Mobile Clinic is their only option for breast cancer screening. In FY22 in partnership with The Christy-Houston Foundation, Ascension Saint Thomas Health Foundation, Ascension Saint Thomas Rutherford Foundation and the Power of Pink, our system purchased a second unit and retrofitted the existing unit with 3D tomography.

684 breast diagnostic procedures were provided free of charge to uninsured or underinsured women in Rutherford and surrounding counties, which was made possible through donor support of the **Power of Pink Fund**.

Cremations: 33

The late Dr. Liz Rhea made the lead donation to establish the St. Joseph Fund at Ascension Saint Thomas Rutherford Hospital. This fund supports end of life needs such as cremations for indigent patients.

"Those who are grappling with the cost of dying can know that they do not have to carry their burdens alone. Because we care, we are resolved to make a difference in the lives and, yes, in the dying, of the poor."
- The Late Dr. Liz Rhea.

The Ascension Saint Thomas Rutherford Foundation **covered the cost of 33 cremations in FY 22 and 17 cremations in FY 21** through the St. Joseph Fund.

Cancer Wellness Program

Cancer Fund

With an initial \$5,000 gift through charitable contributions to the Foundation, the Cancer Wellness Program offers patients a free comprehensive program dedicated to prevention, treatment and survivorship. The goal is to support patients beyond disease treatment and to enrich their well-being—mind, body, and spirit.



Amy's Story

At the beginning of 2021, Amy was experiencing the darkest time in her life. After undergoing 7 cancer related surgeries followed by the pandemic, she was left feeling scared, depressed and isolated. Her counselor suggested Ascension Saint Thomas' Cancer Wellness program.

"I found out about the support group, and then I found out about the physical wellness portion", stated Amy. "I started the online support group and immediately felt a sense of calm I hadn't had since my journey began. The women accepted me, understood me, listened, and let me help them when I could. I had felt alone for so long, and it was almost unbearable. The support group changed that."

Discharge with Dignity

Located in The Christy-Houston Foundation Emergency room at Ascension Saint Thomas Rutherford Hospital, the clothing closet allows patients to be discharged with dignity. Many patients enter our door with the clothes on their backs, in some cases these clothes are soiled or unsuitable to be worn again.

Through monetary donations from our community, the foundation was able to provide **578 pieces of clothing** in FY22 and **136 pieces** in FY21 to our vulnerable patients.

IMPACT OF YOUR SUPPORT IN FY21 & FY22

Rural and Urban Access to Health RideShare Support

Gas cards and partnership with Lyft

ASTRF provides gas cards and transportation services for patients who would otherwise be unable to attend appointments or receive healthcare.

In FY22, ASTRF provided 130 gas cards and funded a **\$2,500** grant to provide Lyft rides to our patients in Rutherford County and surrounding areas.

For the month of April, 4 patients were provided 34 rides to their medical and chemotherapy appointments.

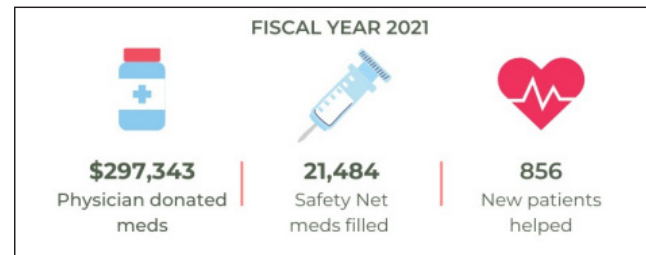
“Had a busy and very gratifying clinic today. A 50 year male who I haranged until he saw a surgeon for a mass in his neck a year ago, returned, fully cured of tonsillar cancer, thanks to: the existence of CCGB, the surgeon Dr. Joe Krick, and Ascension in Murfreesboro who not only treated him for free but gave him gas money to go to daily radiation, and chemotherapy. This is what we must live for; there is no greater joy than this.”

-Retired Physician and Volunteer

Dispensary of Hope

This fund provides medications for those patients unable to afford them. Dr. Wolf began the Dispensary in Murfreesboro with an idea that has grown into a national model.

“I’ve been with Dispensary of Hope since 2009, because I don’t have insurance. If it hadn’t been for them, I guess I’d have done without it and probably wouldn’t be here now.” - Marcie

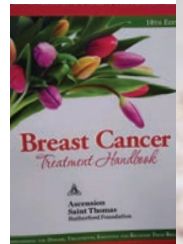


Breast Cancer Treatment Handbooks

As the number one book for newly diagnosed breast cancer patients, the Breast Cancer Treatment Handbook is a comprehensive guide for treatment and recovery - covering all aspects of breast cancer treatment, from diagnosis through recovery.

Through monetary donations from our community, the Foundation was able to provide **\$3,500** toward these resources.

Oncology Nurse Navigator, Kathy Pierce RN, BSN states, *“What is most striking to me is the look on the patient’s face when she comes back for an appointment and tells me how much information she was able to take from the Judy Kneece books. The patients who allow themselves to learn from the education they are provided, have more confidence in their decision-making in their disease process. It’s like a load has been taken off of them and they are able to make appropriate decisions regarding their care.”*





ADVANCING EXCELLENT HEALTHCARE

Striving to ensure this is possible by supporting technological advancements and facility improvements that enhance the patient experience.

\$3,004,637.50 in Total Granted Out Funds



ADVANCING EXCELLENT HEALTHCARE FUND LISTING

Commitment to Superb Patient Care

Capital Building and Equipment Needs

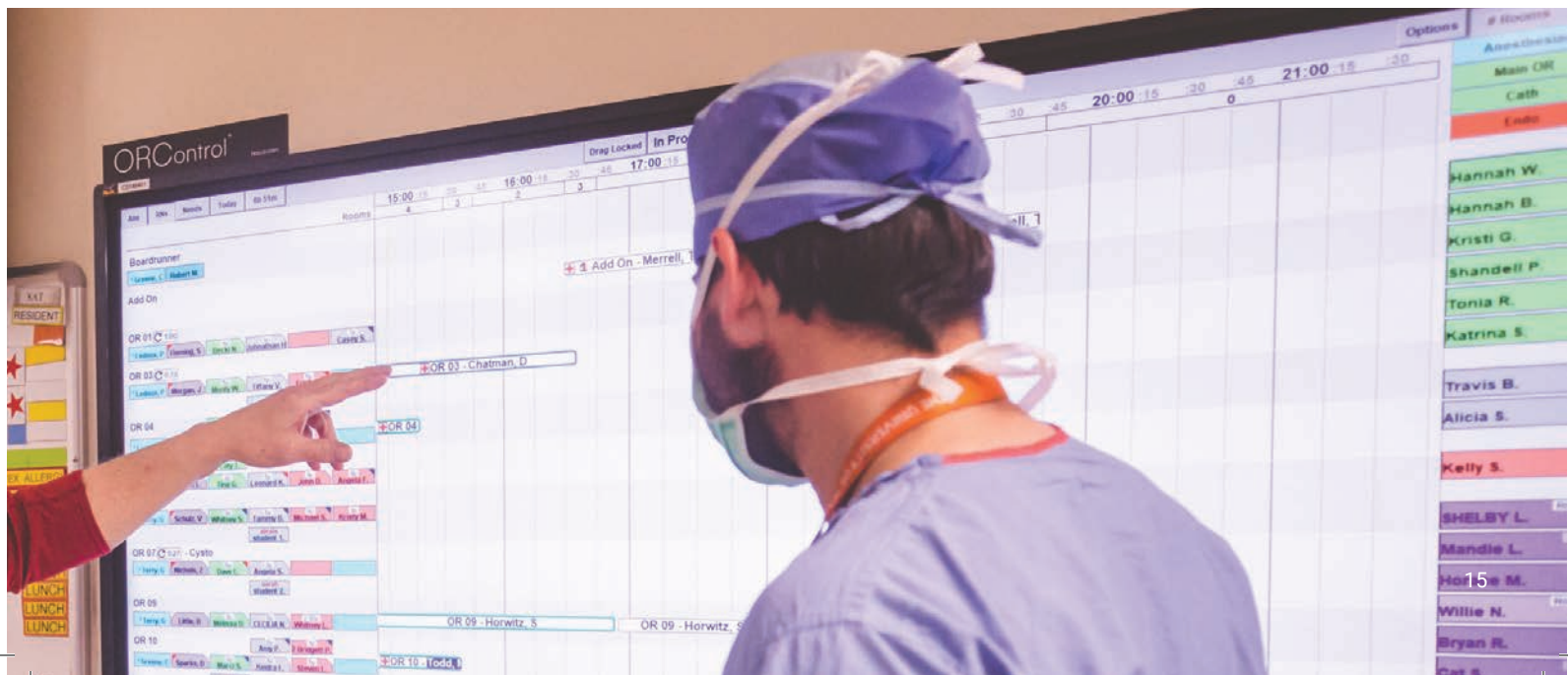
Building Fund/ Created in 1984, the Building Fund was utilized for monies raised from the \$20M “A Time to Build Up” capital campaign conducted from 2007-2013, as well as “A Time to Excel” \$10M capital campaign from 2018-2022. Naming opportunities in the Saint Thomas Rutherford Hospital are still available.

Gift of Wellness Fund/ This fund provides for ongoing equipment needs at the Saint Thomas Rutherford

Wellness Center, located in the Seton Building.

Heart Fund/ Created in 1984, this fund provides cardiac rehab equipment for Saint Thomas Rutherford Hospital Intensive Care Unit and The Wellness Center.

STR Emergency Capital Equipment Fund/ This fund was set up to cover any unbudgeted capital equipment needs for the Saint Thomas Rutherford Emergency Department.



ADVANCING EXCELLENT HEALTHCARE

Infant and Maternal Health

The ASTRF granted **\$54,615.41** from the Dr. Jim Boerner Nursery-Pediatric Fund to support the Nursery, Lee and Susan Moss Family NICU, and Pediatric patients.

Grant highlight: 3 Nicview Cameras were purchased in September 2021. These cameras help families feel more involved right from the start, making them feel a part of the process while being able to video stream 24/7. Families can watch and learn their newborn's routines in the NICU, helping smooth the transition to life at home. In addition, 28 car seats were provided.



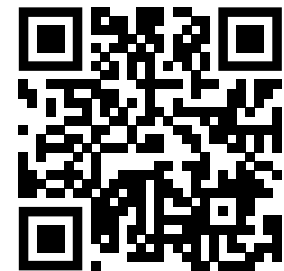
Capital Campaign

In FY21 and FY22 ASTRF granted **\$2.5MIL** from the generous donors of the A Time to Excel Capital Campaign. This campaign would not have been possible without a lead gift of **6 Million dollars** from The Christy-Houston Foundation, Inc. as well as tremendous support from the community, and outstanding leadership from the campaign steering committee. We are proud to celebrate a successful campaign that will ensure we keep quality healthcare close to home.

Grant highlight: Ascension Saint Thomas Rutherford Hospital is meeting the needs of patients by the addition of a Clinical Decision Unit (CDU), additional operating rooms, and increased patient capacity with the addition of the 6th-8th floor west wings.

Want to donate to Ascension Saint Thomas Rutherford Foundation?

Visit rutherfordfoundation.org





SUPPORT OF OUR CAREGIVERS

Improving the lives of those who work for our ministry and helping them realize their full potential as an individual and a caregiver, including emergency assistance, educational opportunities, and scholarships.

\$37,147.31 in Total Granted Out Funds



SUPPORT OF OUR CAREGIVERS FUND LISTING

Consideration for Ascension Saint Thomas Rutherford Caregivers

Associate Education and Training

Dr. George Smith Fund/ Supports The University of Tennessee at Murfreesboro's community-based, university-affiliated training program in its commitment to prepare physicians to provide full spectrum family medicine to the residents of the communities they serve, with a special focus on the needs of the underserved. Supports the needs of the residency program through approved awards for capital and programmatic needs. Residents of the program are also eligible to receive small scholarship awards.

Nursing Scholarships, awarded in June:

Clara and Ed Delbridge Nursing Scholarship Fund

Jean Hastings Memorial Nursing Scholarship Fund

Pallie Jones and Lib Walker Endowed Nursing Scholarship Fund

Sloan-Rice Nursing Scholarship Fund

Friends of Nursing/ Created in 2007 by then VP of Patient Care Services, Michael Bratton, this fund provides money for educational seminars for the STRH nursing staff.

Granville SR Bouldin Scholarship Fund (awarded in June)/ Created in 2003, by a gift from the Christy Houston Foundation, to honor retiring Christy Houston Foundation Director Buck Bouldin. These funds are available to Saint Thomas Rutherford associates seeking education in radiology, physical therapy, and diagnostic laboratories.

Saint Thomas Rutherford Emergency Physicians SANE Fund/ Created in 2014, by Drs. Sherry and Russ Galloway, this fund provides monies to enable Saint Thomas Rutherford nurses to obtain Sexual Assault Nurse Examiner certification

Saint Thomas Rutherford Emergency Physicians Scholarship Fund/ Created in 2014, by Drs. Sherry and Russ Galloway, this fund provides nursing scholarships for Emergency Department nurses and techs.

Associate Care

Saint Thomas Rutherford Emergency Residency Wellness Fund/ Established by STR Emergency physician, Dr. Mary Jane Brown, this fund provides training and physician wellness programs for the STR Emergency Medicine residents & alumni.

George Justin Lombardi Assistance Fund/ Through referrals, this fund assists Saint Thomas Rutherford associates and patients recovering from life altering situations with stopgap assistance in their time of need.

Sister Juliana Fund/ This Saint Thomas Health system fund provides grants for utility bills for associates in need.

SUPPORT FOR OUR CAREGIVERS

Ascension Saint Thomas Rutherford Scholarship Program

"I sat for the MDCB Medical Dosimetry Board Exam in January 2022 and passed the exam. I am now working in a Dosimetrist role in the Cancer Center at St. Thomas Rutherford. I could not be happier with my role here, and thankful for the help the foundation gave me to achieve these academic goals."

In FY22, Ascension Saint Thomas Rutherford associates were awarded scholarships from donor funds totaling **\$29,904.79**.



Cassandra Thon, BS, R.T. (R)(T),
CMD Graduated in August 2021a

Thanks to donor support, the Ascension Saint Thomas Rutherford Foundation Scholarship Program provides assistance through an application process, and remains committed to combating the nursing and healthcare worker shortage as the need for healthcare grows in the United States. The ASTR Foundation

maintains seven scholarship funds that may be applied for by both nurses and techs in multiple fields of medicine to further their education. This allows them to increase their knowledge base, building an ever more skilled nursing force that is vital for quality patient care. For many recipients, further education would not be possible without this assistance. Since 2016, more than \$100,000 has been given to 81 colleagues in tuition assistance.

Sister Juliana Fund

This fund was established in recognition of Sister Juliana's dedicated, compassionate leadership as CEO of Saint Thomas Hospital.

Grant highlight: This fund is available to Associates experiencing an unexpected financial crisis and is often used to offset household expenses to help ease a temporary financial struggle.

In FY21, we helped **107** and in FY22, we helped **102** from the SJ fund.

Covid Support

As the COVID-19 pandemic continued with new variants, Rutherford County continued to rally support for the entire medical staff. Prayer support, chalked sidewalks, hand-written cards, gift boxes and bags for nurses, and **over 3,500 meals** were provided to our associates throughout the year of 2021. Ascension Saint Thomas Rutherford Team members continued to serve others on the front lines.





GUARDIAN ANGELS

The Program

The Guardian Angel Program began in 2007 as an opportunity for patients and family members to honor their physician, nurse, hospital associate, or other caregiver who made a difference in their physician visit or hospital stay.

In 2021, 99 Associates & Physicians received the Guardian Angel Award for a total of **\$7,668.25** in donations!



Tania Sanchez-Romero's Story

Ascension Saint Thomas Rutherford's Chaplain Keith Travis praises Nurse Tania Sanchez-Romero for her servitude and impact during one of the most memorable moments for this patient and their family.

"We had a critically ill patient on the 4th floor that was concerned about his mortality and his spiritual relationship with God. Throughout ongoing conversations with his family and his pastor, this patient felt that it was time to be baptized as an outward sign of his inward conversion. This patient's faith tradition teaches the importance of baptism by immersion."

- Chaplain Keith Travis

Tania's creativity and problem-solving skills made this patient's hopes become a reality.

"After consultation, it was determined that we would be able to use the third-floor birthing pool as a vehicle for baptism. Tania went above and beyond the scope of her daily responsibilities to assist this patient, the patient's family and the patient's clergy to facilitate this baptism by transporting him to the 3rd floor and assisting the patient into and out of the pool with very little notice. Furthermore, Tania's insight and experience was instrumental in offering future guidance and policy recommendations for baptism procedures in the future."

- Chaplain Keith Travis



Chaplain Keith Travis pictured with Nurse Tania Sanchez-Romero

2021 Guardian Angel Recipients

Dr. Ahmad Abu-Halimah
Dr. Mark Akins
Dr. Christopher Albergo
Dr. Brady Allen
Dr. Matthew Barrett
Dr. Robert Bass
Janice Beard
Dr. Chris Beckman
Dr. James Boerner*
Dr. Johann Brandes
Deanna Bratcher
Dr. Elizabeth Bray
Dr. Jared Brock
Dr. Olen Burns
Dr. Angelo Canonico
Dr. Dennis Carter
Dr. James Carter
Dr. David Chatman
Dr. Priya Chaturvedi
Dr. Brad Chesney
Dr. Patrick Clark
Dr. Kelly Davis
Dr. Peter DiCorleto
Dr. Edward Eastham
Gordon Ferguson
Dr. Anna Fuller
Dr. Russell Galloway

Dr. Sherry Galloway
Dr. Roland Garretson
Dr. Tammy Hackney
Jennifer Harlan
Art Hastings
John Hathaway
Michelle Hawkins
Stephanie Hayden
Dulcie Hayes
Dr. James Hayes
Elizabeth Hayslip
Anabel Hobbs
Dr. Ward Houck
Dr. Anna Hristova
Chad Jackson
Dr. Dana Jones
Dr. Michael Jordan
Albert Kattine
Dr. Lindsay Keith
Dr. Diana Kooper
Dr. Warren Langworthy
Dr. Elizabeth LaRoche
Dr. Paul LeDoux
Dr. Brain Lee
Dr. George Lien
Dr. Libby Long
Dr. Lisa Lowe

Dr. Yanjun Ma
Dr. Simi Marwaha
Dr. Joshua McCollum
Dr. Jeremy McDuffie
Kristopher Milland
Dr. Guy Mioton
Deborah Moore
Dr. Michael Moran
Dr. Mary Moss
Dr. Max Moss
Dr. Wayne Murphy
Dr. Stephen Odom
Stacy Palmer
Dr. Utpal Patel
Timothy Pogue
Dr. James Poliner
Dr. Tara Ralph
Dr. Chandrashekhar Ramaiah
Dr. David Ranz
Dr. Edward Rhim
Dr. Michelle Ridings
Dr. Peter Robertson
Dr. Lucas Routh
Dr. James Rungee
Kimberly Saar
Tania Sanchez-Romero
Dr. David Sellers

Dr. Kimberly Shannon
Dr. Theodore Shepard
Dr. William Sherwood
Dr. Matthew Standerwick
Dr. Michael Stany
Dr. Greg Stewart
Dr. Warren Stribling
Caitlin Teeters
Hillary Ward
Rowena Wedgeworth
Dr. Charles Wendt
Michelle Wensch
Dr. Morris Westmoreland
Dr. Lisa White
Dr. Charles Wolohon
Sheila Wood
Dr. Julian Yang
Dr. John Zubkus



RUTHERFORD SOCIETY GALA

The Rutherford Society brings together a compassionate group of local leaders, physicians, associates, patients, and friends to raise awareness and funds for the growing needs of our community, helping to provide vital medical equipment, scholarships for caregivers, education and outreach programs, and most importantly, care for our friends and neighbors who are struggling most.

Honorees:

Dr. Liz Rhea Philanthropist Award:
Sydney and the late Dr. Jim Boerner

Foundation Physician Champion Award:^{BLE}
Dr. Richard A. Rogers

Speaker:

Deborah Roberts, an award-winning ABC News senior national affairs correspondent for “20/20,” “Nightline,” “Good Morning America” and “World News Tonight with David Muir.”

2022 Rutherford Society Chairs:

Kristin Demos, Emma McDaniel and Lissa Young

Our Rutherford Society members are those generous donors who have given an annual gift of **\$1,000 or more.**





GOLF TOURNAMENT

EVENTS

The Ascension Saint Thomas Rutherford Foundation Pediatric Golf Tournament was held in May at the Stones River Country Club. The funds from this event directly support the needs of newborn infants and obstetric and pediatric patients at ASTR. The Alley on Main graciously donated lunch for the 144 golfers and volunteers.

In the first year, the money raised was over \$35,000. This year, the tournament raised over \$40,000 for the fund. In the past six years the Ascension Saint Thomas Rutherford Foundation has funded over \$738,500 for the Nursery, Lee and Susan Moss Family NICU, and Pediatric Units. These funds have been used to purchase NICView Cameras, MamaRoo Swings, NICU Cardiac Monitors, Car Seats, and more for our most vulnerable patients.

In the last two years, the tournament raised over **\$75,000** for the Dr. Jim Boerner Nursery-Pediatric Fund.



Thank you to Our 2021 & 2022 Committee

Ben Parsley,
2021 Chairperson

Mary Elam Polk,
2022 Chairperson

Emily Hunton
Elizabeth Allen
Suzanne Slayton
Matt Layman

Rich Rucker
Pruitt Jones
Garrett Holloway
Jimmy Wheeler
Drew Warren
Kayla Cochran
Joe Cavarretta



Thank you to our 2022 Sponsors

Presenting Sponsor



Platinum Sponsors



Cart Sponsor



Gold Sponsors



Award Sponsor



Teams



Lunch Sponsor



Media Sponsor



Snack Sponsor



Prize Sponsor



Hole Sponsors



ARTIST AT THE ALLEY

EVENTS

The first Artist at the Alley event for the Ascension Saint Thomas Rutherford Foundation Ambassadors took place on December 12th, 2021. The night was filled with fine dining by The Alley on Main, a silent auction, and a private concert by Country Artist, Kip Moore. Moore was opened by the Nashville Cartel members Jared Blake, Jared Weeks and Bigg Vinny, featuring Tippin and McDonald.

The
ALLEY
ON MAIN

The evening raised a total of **\$73,161.77** for the Ascension Medical Partners Saint Louise Family Medical Clinic.

The mission of the Saint Louise Clinic is to serve the community by providing healthcare to all ages regardless of insurance or financial resources. The center is staffed by licensed medical professionals and houses the UT Nashville Family Medicine Residency Program. For those who do not have insurance, fees are based on a sliding scale using federal poverty guidelines.



Saint Thomas
Rutherford Foundation

Ambassadors

The Ascension Saint Thomas Rutherford Ambassadors is a 300-member group that was created in 1989 as a support group of the Ascension Saint Thomas Rutherford Foundation. The current Ambassadors Board President is Suzanne Slayton. The primary purpose of the Ambassadors is to promote Ascension Saint Thomas Rutherford Hospital and help raise funds for various projects, such as providing \$30,000 for new x-ray equipment to the Saint Thomas Rutherford Saint Louise Clinic. The 2020 - 2021 group volunteered at the Inaugural Dr. Jim Boerner Nursery Pediatric Golf Tournament and held the Foundation's first Artist at the Alley event.

Fundraising efforts by the Ambassadors for 2018 until June of 2022 supported the Saint Louise Clinic, which is to serve the community by providing healthcare to all ages regardless of insurance or financial resources. The centers are staffed by licensed medical professionals. For those who do not have insurance, fees are based on a sliding scale using federal poverty guidelines. In 2022, the Ambassadors changed their fundraising efforts to support the expansion of the Lee and Susan Moss Family NICU and the Dr. Jim Boerner Nursery-Pediatric Fund.

Funds raised from the Artist at the Alley totaled **\$73,161.77.**

SPECIAL THANKS TO OUR AMBASSADOR BOARD:

Suzanne Slayton, <i>President</i>	Aimee Hoover	Rebecca Provo
Joyce Taylor, <i>President-elect</i>	Pam Jones	Ann Elizabeth Rucker
Amelia Bozeman	Libby Long	Kristen Taylor
Debbie Caldwell	Sarah Murfree	Carmon Greenberg
Carrie Beth Catron	Maggie Parsley	Dawn White
Beth Cope	Anita Pirtle	

IN MEMORY & HONOR OF

January 2021 - June 2022

Tribute is defined as an act, statement, or gift that is intended to show gratitude, respect, or admiration. A tribute donation is a thoughtful way to show gratitude for and celebrate the life of a special person now gone. These memorial bequests will contribute to the foundation's mission to help others in Middle Tennessee, especially those who are struggling.

Some of the community members listed below are no longer with us, the monies contributed in their names will make a significant impact. Each of these people will live on in the hearts and minds of friends and family, but the honorariums made in their names will reach beyond those whom they knew. These funds will make a difference to those in the community who desperately need help, both today and in the future.

Tribute donations have been made in 2021/2022 to honor or in memory of the following people:

**Dr. Jim Boerner
Sydney Boerner
Jerry Brenda
Mary Jane Brown
Carl Buckner
Claire Bush
Rachel Campbell
Ingram Cope
Dave Davis
Roger Donegan
Isabel Fox**

**Drs. Sherry
& Russ Galloway
Linda Gilley
Marshall Gupton
Art Hastings
Jean Hastings
James Hayes
James Lea
Fred Lovelace
Doyle Lowe
Joseph Marty**

**Katherine May
Ebby Miller
Ed Miller
Dee O'Bannon
Evelyne Peery
Jonelle Prince
Mary Probert
Charlene & Ron Raylor
Christine Reed
Jack & Emily Sant Amour
Dr. Saraswat**

**Jack Sherry
David Singer
Thomas Swain
Joyce Taylor
James Thomas
Blake Tidwell
Ralph Turley
Vera Williams**

DONOR LISTING

Lifetime/\$100,000 & Up

Adams Family Foundation

Adams Family Foundation II

Mr. and Mrs. Brad Allen

Ambassadors to the Foundation

Anonymous*

Anonymous

Mr. and Mrs. Anonymous

Ascension Saint Thomas Health

Ascension Health Partnership in
Ministry

Sydney and Jim* Boerner, M.D.

The Honorable and
Mrs. Ernest Burgess

Mr. and Mrs. Russell L. Burns

Chapel/Harlan

Charity Circle of Murfreesboro

The Christy-Houston Foundation, Inc.

Mr. and Mrs. Mike Coffey

Mr. and Mrs. Richard Curl

Anne and Jeff Davis

Estate of Joyce Barrett Webb

Mr. and Mrs. Gordon B. Ferguson

Drs. Sherry and Russ Galloway

Harlan Electric Company, Inc.

Caryl and Bill Hunter

Kathy and Bill Jones

Mr. and Mrs. David and Pallie Jones

Mr. and Mrs. Ted LaRoche

LaRoche Family Foundation

Mr. and Mrs. Hubert L. McCullough, Jr.*

Donald and Frances McDonald

Dr. Warren McPherson
in Memory of Beverly McPherson

Mid State Neurosurgery, Dr. and
Mrs. George Lien and Dr. and Mrs.
Mike Moran

Middle Tennessee Emergency
Physicians

Jo* and John Morris

Lee and Susan Moss

Mr. and Mrs. Robert B. Murfree

Nashville Machine Company, Inc.

National Health Foundation

National Healthcare Corporation

Bob and Marie Parks Foundation

Pinnacle Financial Partners

Mr. and Mrs. Mark Pirtle

Premier Radiology

Dr. Elizabeth Rhea*

Drs. Suresh and Sudha Saraswat

Anonymous

Melanie and Barry Shipp

Dr. Ellen and Richard Slicker

State Farm Automobile Insurance

State of Tennessee

Susan G. Komen for the Cure

Reconstructing for Life
Dr. and Mrs. Nicholas A. Tarola

The Joe Swanson Family

The Sixteen Foundation

The Wakefield Corporation

Turner Construction Company

United Way of
Rutherford County

Beth and Mike Ussery

Mr. and Mrs. John B.* Woodfin

ANNUAL DONORS 2021-FY22

\$10,000-\$99,999

Belmont University
 The Bruning Foundation/
 Wulff Family
 Dr. and Mrs. Edward
 D. Eastham
 Mr. and Mrs. John Harney
 LaRoche Family Foundation
 MiMedx Group, Inc.
 Nissan North America
 Foundation
 Mr. and Mrs. D. Kerry O'Brien
 Drs. Shipra and
 Bhabendra Putatunda
 Dr. and Mrs. James Rungee
 Site Engineering
 Consultants, Inc.
 Stones River Country Club
 Ladies Golf Association
 Dr. and Mrs. Christopher
 A. Waynick
 Mr. and Mrs. George
 H. White
 White & Polk PC

Anthony Wulff
 Dustin York
\$5,000-\$9,999
 Mr. and Mrs. David R. Beeny
 Dye Family Charitable Fund

FirstBank
 Mr. and Mrs.
 Crawford Gallimore
 Dr. and Mrs. Scott
 J. Galloway
 David Grant
 Mr. and Mrs. William
 K. Halliburton
 Holloway Accounting
 Services, LLC
 Mr. and Mrs. George* H. Law
 Sandra Marty
 Middle Tennessee
 Emergency Physicians, P.C.
 Middle Tennessee Electric
 SharingChange, Inc.
 Mr. and Mrs. Newton F.
 Molloy, III

Robert W. Baird and Co., Inc.
 Dr. Mary J. Brown and Mr.
 Dennis Sander
 The University of
 Tennessee - Knoxville
 Woodfin Funeral Chapel, Inc.
 YourCause, Inc.

\$2,500-\$4,999

Stacey and Thomas Beaven
 Mr. and Mrs. John T. Bragg
 Dr. and Mrs. Patrick W. Clark
 Coggin Family Foundation
 The Community Foundation
 of Middle Tennessee
 Design Blasting Services, LLC
 Mr. and Mrs. John D. Floyd
 Gamers Outreach Foundation
 Mr. and Mrs. Elias E. Hassan
 John Jones Real Estate, LLC
 Tracy and John Jones
 Kara Kemp

Kings Men Sunday
 School Class
 Dr. Diana and Douglas Kooper
 Mr. and Mrs. Paul Lawson
 Dr. Libby A. Long and
 Chris Taylor
 Dr. and Mrs. Frank B.
 Louthan, III
 Patty and John Marschel
 Mark McEntire
 Middle Tennessee
 Association of Realtors
 Tracy and Robert Mifflin
 William Millican
 Murfreesboro Breakfast
 Rotary Club Foundation
 Murfreesboro Medical Clinic
 Jamie Noe
 Parks Village
 Mary Elam and Mark Polk
 Jimmy G. Prince
 Rawso Constructors

ANNUAL DONORS 2021-FY22

Dr. and Mrs. Richard A. Rogers	Anonymous	Drs. David and Yolando Chatman	Barbara Ford
Dr. Kristin Salter	Anonymous	Mr. and Mrs. Neely Coble, III	Mr. and Mrs. Allen D. Fuller
SmartBank	Anonymous	Mr. and Mrs. Rucker Collier	Dr. Rhea Seddon and Captain Robert L. Gibson
Mr. and Mrs. Richard Stewart	Anonymous	Mr. and Mrs. Jack Collins, III	Goat Turf
Jeffrey Suter	Rita and Honorable Don Ash	Donna S. Davenport	Dr. and Mrs. Charles E. Goodman, Jr.
TDK Construction Company, Inc.	ASTR Chapel Collection	Linda G. Davis*	Les Gray
Tim Tinsley	Volunteer State Bank	Kristin and Peter Demos	Melinda Haines
Mr. and Mrs. Jim Underwood	Dr. and Mrs. Matthew O. Barrett	Dr. and Mrs. Peter A. DiCorleto	Lady and Bart Hamilton
Vann Go Luxury Restrooms and Portable Solutions	Mary D. Baxter	Dr. and Mrs. Robert J. Dray	Dr. and Mrs. Mark Hardison
Volunteer Behavioral Health	Janice E. Beard	Gwen and Clay Dyer	Dr. and Mrs* Payne Hardison
Anne Zelle	Mr. and Mrs. Jerry L. Benefield	Katie and Matt Edwards	Mr. and Mrs. Charlie Harrison
\$1,001-\$2,499	Bishop Dental Office Drs. Melanie and James Bishop	Gay and Kenneth Ensey	Jean Hastings in memory of Art Hastings
Mr. and Mrs. Tim Adams	Patricia J. Bloomfield	Patricia O. Evans	Carole Headen
Mr. and Mrs. James Aho, Jr.	Dr. Gloria and Mr. Ray Bonner	F & M Bank	Dr. and Mrs. Wayne Henderson
Dr. and Mrs. Mark Akins	Mr. and Mrs. Dale S. Boyd	Fiber Solutions	Mr. and Mrs. Garrett Holloway
The Alley on Main	Dr. and Mrs. Henry King Butler	First Horizon Foundation	Mr. and Mrs. Alan and Donna Holt
Nancy L. Anness	Dr. John M. Byrnes	First National Bank	Mr. and Mrs. Eric Howser
Anonymous	Dr. and Mrs. Dennis C. Carter	Mr. and Mrs. Mark E. Follis	
Anonymous		Mr. and Mrs. Roman Fonseca	

ANNUAL DONORS 2021-FY22

Mr. and Mrs. Earl H. Hull, Jr.

Mr. and Mrs. Shelby and
Emily Hunton

Mr. and Mrs. Rick Insell
Amy and Chris Jackson

Dr. and Mrs. Chad
M. Jackson

Mr. and Mrs. D.
Edwin Jernigan

Jobe, Hastings
and Associates

Dr. and Mrs. Warren
T. Johnson

Dr. and Mrs. Mike
R. Jordan

Pam N. Keating

Marla and Billy King

Pamela C. Kious

Ralph Knauss

Brook and David LaRoche

Dr. and Mrs.
Matthew Layman

Dr. James* and Lucinda Lea

Dr. Eva and Thomas Leinart

Lipscomb University
College of Pharmacy

Tiffany and Justin Locke

Mr. and Mrs. Ed C.
Loughry, Jr.

Mary B. Lovelace

Mr. and Mrs. Bryan Lowe

Dr. and Mrs. David Bauman
Emma and Tate McDaniel

Glenda and Roger Meredith

Middle Tennessee Oral and
Maxillofacial Surgery, PLLC

Middle Tennessee Electric

Dr. and Mrs. Guy Britton
Mioton, Jr.

Drs. Mary and Max Moss

John P. Murfree, DDS

Murfree Family Holdings

Murfreesboro Anesthesia
Group, P.A.

Drs. Wayne and
Dorothy Murphy

Drs. Ronald and
Laura Nelson

Mr. and Mrs.
Thomas Newsom

Keyle D. Nitz

Old Time Pottery

Ole South Properties

Susan Parker

Mr. and Mrs. David Parsons

Dr. and Mrs. Paul Pasarilla

Mr. and Mrs. Warren
S. Perkins

Dr. and Mrs.
Matthew Perkins

Dr. Jason and
Krystal Pollock

Julia W. Powell

Dr. Shirley S. LaRoche-Powell

David Prince

Kit and Chuck Ramsay

Redstone Federal
Credit Union

Dr. and Mrs. Stephen F. Rich

Marcia L. Richmond

Dr. and Mrs. Peter
G. Robertson

Mr. and Mrs. Thomas
E. Roddy

William J. Rucinski

Dr. and Mrs. Brad Russell

Mr. and Mrs. Dan D. Scott

Drs. Erika and
Michael Silberman

Dr. Pamela Singer and Mr.
Ray Singer

Mr. and Mrs. Jeffrey
L. Slaney

Dr. and Mrs. Geoffrey
H. Smallwood

Cindy R. Smith

Toni M. Smith

Smith-Wright Law

Sidney Stolz

Stones River Country Club
Tennis Association

Stones River
Dermatology, PLC

Mr. and Mrs. H.
Rick Swafford

ANNUAL DONORS 2021-FY22

Colby Swann

Swanson Developments, LP

Joyce Taylor

TD Ameritrade Institutional

Dan and Mara Thompson

Mr. and Mrs. Larry Tolbert

Emmett Toombs

Carmel and
Thomas Tritschler

Kimberly Troutt

Mr. and Mrs.
Paul Walmsley

Dr. and Mrs. Paul Warden

Addiesue Webb

The Webb School

Dr. and Mrs.
Wayne Westmoreland

James R. Wheeler

The Honorable Dawn White and
Chad White

Mr. Andy Womack

Dr. and Mrs. Dexter L. Woods, III

Mr. and Mrs. Lee Woosley

World Outreach Church

Dr. and Mrs. Andrew
M. Wright

Dr. and Mrs. John D. Zubkus

**deceased*

Thank you
to our donors!

ASCENSION SAINT THOMAS RUTHERFORD HOSPITAL BY THE NUMBERS

Health System



1,460

Associate Number FTES



\$51,878,338

Amount Given in Charity Care



358

Available Beds



234

Employed Providers



110

Hospital
Volunteers

Patients Served



10,343

Inpatient and
Outpatient Surgeries



3,699

Births



77,265

Emergency
Department Visits



20,736

Admissions

Philanthropy



4,422

Patients Helped



687

Donors



3,939

Gifts



30

Board Members
and Staff



100+

Foundation
Volunteers

RUTHERFORD EXPANSION PROJECTS

To advance the next phase of ASTR's evolution to a higher acuity hospital, Rutherford has launched multiple concurrent projects.

- High Acuity Specialty Bed Expansion
 - 36 new higher acuity inpatient beds - *Q4 CY22*
 - 1,000 new structured parking space - *Q3 CY23*
 - Westlawn Neighborhood Hospital - *Q1 CY23*
- Clinical Program Development
 - 18 new CCU beds - *Q1 CY24*
 - Six additional NICU bassinets - *Q2 CY23*
 - Optimization of PACU via 17 new bays - *Q3 CY24*
- New MOB and Cancer Center - *Q3 CY24*



Westlawn Neighborhood Hospital

To learn more about the Lee and Susan Moss Family NICU expansion campaign or naming opportunities, please reach out to Gina DeJean, virginia.dejean@ascension.org / 615-396-4809.



Lee and Susan Moss Family NICU

Over the next several months, the Lee and Susan Moss Family NICU will undergo major development to bring excellent patient care to the next level with up-to-date facility features that will enhance the family stay and reinforce the superior treatment provided by the medical team. The anticipated project will expand the NICU from 11,000 square feet to approximately 13,000 square feet. This new space will include 6 additional incubators, which will provide room for a total of 22 NICU babies and will include space for multiples, where patients can spend as much time as they wish with their newborn. In addition, there will be ample space for state-of-the-art technology, furniture, staff and family, enhancing a new family waiting room, and renovating sleep rooms for NICU parents and babies.

“With Ascension Saint Thomas Rutherford being home to the only birthing hospital and NICU in Murfreesboro, it was an obvious choice to plan this expansion project,” said Gina DeJean, director of The Ascension Saint Thomas

Rutherford Foundation. “We currently care for an astonishing average of 421 NICU infants each year, and the need for NICU services is increasing. We are thankful for generous donors like Lee and Susan who see our vision for this project to ensure that the needed physical space, the advanced technology, and trained healthcare professionals are available to provide intensive medical attention to newborn babies in our community.”



NEW FUND HIGHLIGHTS AND NAMINGS

New Memorial Endowment

The late Dr. George Smith made history as one of Murfreesboro's first prominent African-American physicians. Now his legacy has inspired an anonymous donor to invest locally in the education of doctors-in-training.

With a **\$100,000** gift, the donor has established the Dr. George W. Smith Family Medicine Residency Memorial Endowment through the Ascension Saint Thomas Rutherford Foundation.

One portion of this gift will support mental health and wellness activities for members of the University of Tennessee at Murfreesboro Family Medicine Residency Program and another portion has been earmarked to directly support residents of color.

The 8th floor West wing will be named the **Dr. George W. Smith West Wing** in his honor.



Dr. Ellen and Richard Slicker 6th Floor East Wing

"We have been involved with the Ascension Saint Thomas Rutherford Hospital Foundation for many years because we believe in their Christian mission to provide life-saving medical care for all the citizens of Rutherford County and beyond. This community has given us many opportunities, warm friendships, and moving experiences over the past 30 years for which we are truly grateful. It's only fitting that we give back to the community that we call home. We give to improve the lives of those who are served by the Ascension Saint Thomas Rutherford Hospital Foundation."

- Dr. Ellen Slicker

NEW FUND HIGHLIGHTS AND NAMINGS

The Lee and Susan Moss Family NICU

Lee and Susan have been supporters of Ascension Saint Thomas Rutherford, originally Middle Tennessee Medical Center, when Lee began his service on the Ascension Saint Thomas Rutherford Hospital Board in 2002. He also served as chairman of directors for the Ascension Saint Thomas Board from 2019 to 2021. “In early 2022, Lee approached me about wanting to do something in support of the hospital and our foundation,” said Gordon Ferguson, president and CEO of Ascension Saint Thomas Rutherford. “Our team was honored. With their support, we have plans to expand and modernize the NICU.” We are thankful for generous donors like Lee and Susan who see our vision for this project to ensure that the needed physical space, the advanced technology, and trained healthcare professionals are available to provide intensive medical attention to newborn babies in our community.



James P. and Alice R. Burns Saint Louise Clinic Fund

Russ and Allison Burns provided a generous gift to the community in honor of Russ’s late parents, James and Alice Burns. “I wanted to give back to the community that raised me,” said Russ. This \$100,000 gift through the Ascension Saint Thomas Rutherford Foundation will support the mission of the Ascension Medical Group Saint Thomas Saint Louise Family Medicine Center to provide high-quality and affordable care for Murfreesboro’s most vulnerable and at-risk residents. The newly established James P. and Alice R.

Burns Saint Louise Clinic Fund will support patients by providing them access to health services such as dental, vision, hearing, durable meds, health condition coaching, and behavioral health assistance. In addition, the contribution may provide care to those without insurance who struggle financially, emotionally, and spiritually.

Thankful, Grateful, and Truly Blessed



Ascension Saint Thomas
Rutherford Foundation

615-396-4953

rutherfordfoundation.org

1700 Medical Center Parkway
Murfreesboro, TN 37129