



Ascension Saint Thomas
Rutherford Foundation

FISCAL YEAR / 2022 IMPACT REPORT

1700 Medical Center Parkway
Murfreesboro, TN 37129
rutherfordfoundation.org

TABLE OF CONTENTS

PAGE #
Title

PAGE #
Title

PAGE #
Title

PAGE #
Title

PAGE #
Title

PAGE #
Title

PAGE #
Title

PAGE #
Title

PAGE #
Title

OUR MISSION

Rooted in the loving ministry of Jesus as healer, we commit ourselves to serving all persons with special attention to those who are poor and vulnerable. Our Catholic health ministry is dedicated to spiritually centered, holistic care, which sustains and improves the health of individuals and communities. We are advocates for a compassionate and just society through our actions and our words.

OUR PURPOSE

The role of the Ascension Saint Thomas Rutherford Foundation is to support the mission of Ascension Saint Thomas Rutherford. The Foundation serves the people and system needs throughout Middle Tennessee and the Ascension Saint Thomas network of care. We embrace the philosophy and mission of healing and service to those who are struggling as the fundamental purpose of our ministry.

CARE FOR ALL PATIENTS

The Foundation is here to bridge the gap for those patients who do not have the financial resources to continue their care after leaving us by offsetting the cost of durable medical equipment, prescription medications and care beyond the bedside.

ADVANCING EXCELLENT HEALTHCARE

All persons deserve the best care available. The Foundation strives to ensure this is possible by supporting technological advancements and facility improvements that enhance the patient experience.

SUPPORT OF OUR CAREGIVERS

The Foundation helps to meet the needs of those who work for our ministry, improving their lives and helping them realize their full potential as an individual and a caregiver. There are many ways the Foundation supports our own, including emergency assistance, educational opportunities, and scholarships.

Meaning of Ascension

Our Historic Sponsors chose the name “Ascension” because it invites us all to share in the healing ministry and implies hope and growth. The name references an account in the Christian scriptures of when Jesus ascends to heaven and places his healing ministry into the hands of that early community, sending them forth to be vessels and instruments of transformation. The Ascension logo is the primary symbol of our organization. It unifies us across businesses and geographies, and signals to the world who we are and what we stand for. Our logo reflects our Mission. Used consistently, it raises awareness and recognition of our commitment to and impact on innovative healthcare services.

Meaning of Ascension Colors

The three colors in the symbol were chosen to represent the Christian trinity symbol, with **green representing growth**, **blue for health** and **purple for compassion**. The integration of the “A” in Ascension with the trinity symbol forever links the two and allows us to tell the stories of commitment, compassion and growth of a healthy community.

LETTER FROM THE BOARD PRESIDENT

FY 2020 - FY 2022



Newton Molloy
ASTR Foundation President

The Ascension Saint Thomas Rutherford Foundation strives to support and seeks to help improve the outcome of everyone in our Hospital's care. Through your continued support and the support of our community during these unprecedented times, we have been able to meet the challenge and accomplish our goals. We thank each one of you for what you do for OUR Hospital through the Foundation.

The Covid-19 pandemic persisted throughout 2021 with its new variations of the virus. This again put a tremendous stress on our Hospital, Doctors, Nurses, and Staff. It required new found patience and perseverance to adjust to the changing medical situations as cases spiked, retreated, and then spiked again during the year. In the midst of these challenges, our Hospital Administration has continued to look toward the future of our growing community, medical facilities and the specialties that will be needed as we go forward.

It is in this context, that our Hospital Foundation, our Ambassadors and community supporters have continued to provide support to the Doctors, Nurses and Staff. When our staff is besieged and under pressure your support reminds them that our community cannot do without them and cares a Great Deal for each one of them and the mission they are fulfilling. They are Indeed our Heroes who provide this much needed medical care.

BOARD MEMBERS



Mr. Newton Molloy
President



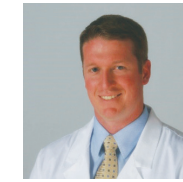
Elizabeth Allen



Sydney Boerner



Dennis Carter, M.D.



Patrick Clark, M.D.



Debbie Cope



Dave Davis



Vicki Eastham



Lady Hamilton



Ashley Holloway



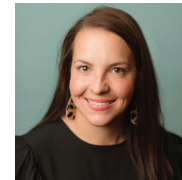
Emily Hunton



Jamie Jackson



David Jones



Caroline Lampley



David LaRoche



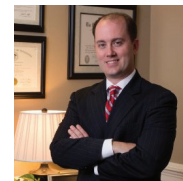
Matt Layman, M.D.



Libby Long, M.D.



Patty Marschel



Ben Parsley



Shannon Parsons



Mary Elam Polk



Arundati Ramesh, M.D.



Ann Elizabeth Rucker



Suzanne Slayton



Joyce Taylor



Mike Ussery



Jimmy Wheeler

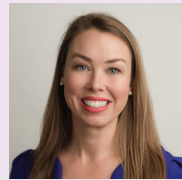


Jeff Younginer



Mr. Gordon B. Ferguson
President & CEO

& FOUNDATION STAFF



Virginia DeJean
Director



Hayley McCracken
Development Coordinator



Kimberly Hopkins
Administrative Assistant

HOSPITAL STATS

Associate Number - FTES:

1,515

Amount Given in Charity Care

\$50,869,150

Emergency Department Visits

70,742

Available Beds

358

Births

3,385

Inpatient and Outpatient Surgery

9,386

**numbers reported are for dates July 1, 2021 to June 17, 2022*

YOUR GIFT MATTERS

Your contributions help others when they need it most. Here are a few highlights of the impact of your support in FY22.

Ascension Saint Thomas Rutherford Scholarship Program

"I sat for the MDCB Medical Dosimetry Board Exam in January 2022 and passed the exam. I am now working in a Dosimetrist role in the Cancer Center at St. Thomas Rutherford. I could not be happier with my role here, and thankful for the help the foundation gave me to achieve these academic goals."

In FY22, Ascension Saint Thomas Rutherford associates were awarded a total of **\$29,904.79** in scholarships to 22 associates provided by donors.

Thanks to donor support, the Ascension Saint Thomas Rutherford Foundation Scholarship Program provides assistance through an application process, and remains committed to combating the nursing and healthcare worker shortage as the need for healthcare grows in the United States. The ASTF maintains seven scholarship funds that may be applied for by both nurses and techs in multiple fields of medicine to further their education. This allows them to increase their knowledge base, building an ever more skilled nursing force that is vital for quality patient care. For many recipients, further education would not be possible without this assistance. Since 2016, more than \$100,000 has been given to 81 colleagues in tuition assistance.

Cassandra Thon, BS, R.T. (R)(T), CMD
Graduated in August 2021



Our Mission in Motion Mobile Mammography Clinic



Ascension Saint Thomas provides breast cancer screenings and preventive education to women throughout 26 counties in Middle Tennessee. The Mobile Mammography Clinic remains the most effective method of reaching underserved women who face barriers of cost, time, and transportation to access the Hospital's resources. For many women, the Mobile Clinic is their only option for breast cancer screening. In FY22 in partnership with The Christy-Houston Foundation, Ascension Saint Thomas Health Foundation, Ascension Saint Thomas Rutherford Foundation and the Power of Pink, our system purchased a second unit and retrofitted the existing unit with 3D tomography.

In 2021 – end of FY22, **684** breast diagnostic procedures were provided free of charge to uninsured or underinsured women in Rutherford County, which was made possible through donor support of the Power of Pink Fund.

YOUR GIFT MATTERS

Infant and Maternal Health

In FY22 the ASTRF granted **\$39,274** from the Dr. Jim Boerner Nursery-Pediatric Fund to support the Nursery, Lee and Susan Moss Family NICU, and Pediatric wing.

Grant highlight: The purchase of 3 Nicview Cameras in September 2021. These cameras help families feel more involved right from the start, making them feel a part of the process while being able to video stream 24/7. Families can watch and learn their newborn's routines in the NICU, helping smooth the transition to life at home.



Rural and Urban Access to Health RideShare Support

Gas cards and partnership with Lyft
ASTRF provides gas cards and transportation services for patients who would otherwise be unable to attend appointments or receive healthcare.

In FY22, ASTRF provided 80 gas cards and funded a **\$2,500** grant to provide Lyft rides to our patients in Rutherford County and surrounding areas.

For the month of April, 4 patients were provided 34 rides to their medical and chemotherapy appointments.

Cancer Wellness Program

Cancer Wellness Fund

Funded through charitable contributions to the Foundation, the Cancer Wellness Program offers patients a free comprehensive program dedicated to prevention, treatment and survivorship. The goal is to support patients beyond disease treatment and to enrich their well-being—mind, body, and spirit.

Amy's Story

At the beginning of 2021, Amy was experiencing the darkest time in her life. After undergoing 7 cancer related surgeries followed by the pandemic, she was left feeling scared, depressed and isolated. Her counselor suggested Ascension Saint Thomas' Cancer Wellness program.



"I found out about the support group, and then I found out about the physical wellness portion", stated Amy. "I started the online support group and immediately felt a sense of calm I hadn't had since my journey began. The women accepted me, understood me, listened, and let me help them when I could. I had felt alone for so long, and it was almost unbearable. The support group changed that."

Cremations: 16

The late Dr. Liz Rhea made the lead donation to establish the St. Joseph Fund at Ascension Saint Thomas Rutherford Hospital. This fund supports end of life needs such as cremations for indigent patients.

"Those who are grappling with the cost of dying can know that they do not have to carry their burdens alone. Because we care, we are resolved to make a difference in the lives and, yes, in the dying, of the poor."
- *The Late Dr. Liz Rhea.*

In FY 22 the Ascension Saint Thomas Rutherford Foundation **covered the cost of 16 cremations** through the St. Joseph Fund.

Discharge with Dignity

Located in The Christy-Houston Foundation Emergency room at Ascension Saint Thomas Rutherford Hospital, the clothing closet allows patients to be discharged with dignity. Many patients enter our door with the clothes on their backs, in some cases these clothes are soiled or unsuitable to be worn again.

Through monetary donations from our community, the foundation was able to provide **578 pieces of clothing** in FY22 to our vulnerable patients.

Ambassador Fund

Do we need this here when we have the event info for artist at the alley below???

Cancer Patients- Books

\$3,500

FUND LISTING */3 pillars*

Compassion for Struggling Patients

Care of the Poor and Sick

Ambassadors Fund/ Monies are raised by the Saint Thomas Rutherford Foundation Ambassadors to fund special projects, such as the Mobile Health Unit and the Saint Louise Clinic.

Cancer Fund/ The Cancer Fund is used to purchase equipment, fund renovations, and support indigent cancer patients.

C.H. Hunt Indigent Patient Care Fund/ This fund assists indigent patients by providing needed medications and medical equipment, usually at the time of discharge.

Dispensary of Hope/ This fund provides medications for those patients unable to afford them. Dr. Wolf began the Dispensary in Murfreesboro with an idea that has grown into a national model.

Lymphedema Fund/ Created in 2004, by Saint Thomas Rutherford Hospital physical therapist Linda Bullard, this fund provides anti-swelling garments for indigent lymphedema patients.

Mobile Health Ministry Fund/ This fund was created to support the operating costs associated with the Saint Thomas Rutherford Mobile Health Ministry.

Dr. Jim Boerner Nursery-Pediatric Fund/ Created in 1984, this fund serves Labor and Delivery, the Well Baby Nursery and the NICU on the third floor, as well as the Pediatric Unit on the sixth floor. These funds may include provision of specialized care for newborn infants and support for obstetric patients.

Power of Pink - Breast Center Fund/ This fund provides mammograms and breast biopsies for local uninsured, underinsured, and indigent ladies in Rutherford County. Proceeds from Wine Around the Square benefit this fund.

Renewing Hope Fund/ Created in 2005, this fund was created to aid those in need after a natural disaster. Saint Joseph Fund- Created in 2014, by Dr. Liz Rhea, this fund provides for end-of-life needs and expenses for indigent patients at Saint Thomas Rutherford Hospital.

James P. and Alice R. Burns Saint Louise Clinic Fund/ Created in 2014, this fund was created to support the work of the Saint Louise Clinic and to provide for capital needs.

Commitment to Superb Patient Care

Capital Building and Equipment Needs

Building Fund/ Created in 1984, the Building Fund was utilized for monies raised from the \$20M "A Time to Build Up" capital campaign conducted from 2007-2013. Naming opportunities in the new Saint Thomas Rutherford Hospital are still available.

Gift of Wellness Fund/ This fund provides for ongoing equipment needs at the Saint Thomas Rutherford Wellness Center, located in the Seton Building.

Heart Fund/ Created in 1984, this fund provides cardiac rehab equipment for Saint Thomas Rutherford Hospital Intensive Care Unit and The Wellness Center.

STR Emergency Capital Equipment Fund/ This fund was set up to cover any unbudgeted capital equipment needs for the Saint Thomas Rutherford Emergency Department.

Consideration for Ascension Saint Thomas Caregivers

Associate Education and Training

Dr. George Smith Fund/ Supports the The University of Tennessee at Murfreesboro community-based, university-affiliated training program in its commitment to prepare physicians to provide full spectrum family medicine to the residents of the communities they serve, with a special focus on the needs of the underserved. Supports the needs of the residency program through approved awards for capital and programmatic needs. Residents of the program are also eligible to receive small scholarship awards.

Nursing Scholarships, awarded in June:

Clara and Ed Delbridge Nursing Scholarship Fund

Jean Hastings Memorial Nursing Scholarship Fund

Pallie Jones and Lib Walker Endowed Nursing Scholarship Fund

Sloan-Rice Nursing Scholarship Fund

Friends of Nursing/ Created in 2007 by then VP of Patient Care Services, Michael Bratton, this fund provides money for educational seminars for the STRH nursing staff.

Granville SR Bouldin Scholarship Fund (awarded in June)/ Created in 2003, by a gift from the Christy Houston Foundation, to honor retiring Christy Houston Foundation Director Buck Bouldin. These funds are available to Saint Thomas Rutherford associates seeking education in radiology, physical therapy, and diagnostic laboratories.

Saint Thomas Rutherford Emergency Physicians SANE Fund/ Created in 2014, by Drs. Sherry and Russ Galloway, this fund provides monies to enable Saint Thomas Rutherford nurses to obtain Sexual Assault Nurse Examiner certification

Saint Thomas Rutherford Emergency Physicians Scholarship Fund/ Created in 2014, by Drs. Sherry and Russ Galloway, this fund provides nursing scholarships for Emergency Department nurses and techs.

Associate Care

Saint Thomas Rutherford Emergency Residency Wellness Fund/ Established by STR Emergency physician, Dr. Mary Jane Brown, this fund provides training and physician wellness programs for the STR Emergency Medicine residents & alumni.

Sister Juliana Fund/ This Saint Thomas Health system fund provides grants for utility bills for associates in need.

George Justin Lombardi Assistance Fund/ Through referrals, this fund assists Saint Thomas Rutherford associates and patients recovering from life altering situations with stopgap assistance in their time of need.

Want to donate to Ascension Saint Thomas Rutherford Foundation?

Visit rutherfordfoundation.org



EVENTS

Rutherford Society Gala

The Rutherford Society is a group of people who love Ascension Saint Thomas Rutherford Hospital. The Society thanks all donors of \$1,000 or more per year with two tickets to the Rutherford Society Gala. In light of the COVID-19 pandemic, the 14th Annual Rutherford Society Gala was held in member's homes instead of in person. The Ascension Saint Thomas Rutherford Foundation chose to show appreciation to donors through a drive-thru fine dining meal pickup provided by Five Senses.

Donors enjoyed an elegant dinner at home and received a gift tote with a QR code to a video of the Foundation's accomplishments over the year.

2021 Co-Chairs

Ann Elizabeth and Rich Rucker Brook and David LaRoche



Ascension Saint Thomas Rutherford Foundation Pediatric Golf Tournament

The inaugural Ascension Saint Thomas Rutherford Foundation Pediatric Golf Tournament took place on May 17, 2021 at the Stones River Country Club. The funds from this event directly support the needs of newborn infants, and obstetric and pediatric patients at ASTR. The Alley on Main graciously donated Lunch for the 144 golfers and volunteers.

The tournament raised over **\$36,700** for the Dr. Jim Boerner Nursery-Pediatric Fund.

Thank You to Our 2021 Committee

Ben Parsley, *Chairperson*
 Emily Hunton
 Mary Elam Polk
 Elizabeth Allen
 Suzanne Slayton
 Matt Layman
 Rich Rucker
 Pruitt Jones
 Garrett Holloway
 immy Wheeler
 Drew Warren
 Kayla Cochran



ASCENSION SAINT THOMAS RUTHERFORD FOUNDATION

GOLF TOURNAMENT

benefiting the Dr. Jim Boerner Nursery-Pediatric Fund



EVENTS

Artist at the Alley

The first Artist at the Alley event for the Ascension Saint Thomas Rutherford Foundation Ambassadors took place on December 12th, 2021. The night was filled with fine dining by The Alley on Main, a silent auction, and a private concert by Country Artist, Kip Moore. Moore was opened by the Nashville Cartel members Jared Blake, Jared Weeks and Bigg Vinny, featuring Tippin and McDonald.

The evening raised a total of **\$73,161.77** for the Ascension Medical Partners Saint Louise Family Medical Clinic.

The mission of the Saint Louise Clinic is to serve the community by providing healthcare to all ages regardless of insurance or financial resources. The center is staffed by licensed medical professionals and houses the UT Nashville Family Medicine Residency Program. For those who do not have insurance, fees are based on a sliding scale using federal poverty guidelines.

The
ALLEY
ON MAIN



Saint Thomas
Rutherford Foundation

Ambassadors

The Saint Thomas Rutherford Ambassadors is a 300-member group that was created in 1989 as a support group of the Saint Thomas Rutherford Foundation. The current Ambassadors Board President is Suzanne Slayton. The primary purpose of the Ambassadors is to promote Ascension Saint Thomas Rutherford Hospital and help raise funds for various projects, such as providing \$30,000 for new x-ray equipment to the Saint Thomas Rutherford Saint Louise Clinic. This group volunteered at the Inaugural Dr. Jim Boerner Nursery Pediatric Golf Tournament and held the Foundation's first Artist at the Alley event.

Fundraising efforts by the Ambassadors currently support the mission of the Saint Louise Clinic, which is to serve the community by providing healthcare to all ages regardless of insurance or financial resources. The centers are staffed by licensed medical professionals. For those who do not have insurance, fees are based on a sliding scale using federal poverty guidelines.

Funds raised from the Artist at the Alley totaled **\$73,161.77**.

SPECIAL THANKS TO OUR AMBASSADOR BOARD:

Suzanne Slayton, <i>President</i>	Pam Jones	Ann Elizabeth Rucker
Amelia Bozeman	Libby Long	Joyce Taylor
Debbie Caldwell	Sarah Murfree	Kristen Taylor
Carrie Beth Catron	Maggie Parsley	Carmon Greenberg
Beth Cope	Anita Pirtle	Dawn White
Aimee Hoover	Rebecca Provo	

GUARDIAN ANGEL

The Program

The Guardian Angel Program began in 2007 as an opportunity for patients and family members to honor their physician, nurse, hospital associate, or other caregiver who made a difference in their physician visit or hospital stay.

In 2021, 99 Associates & Physicians received the Guardian Angel Award for a total of **\$7,668.25** in donations!



Tania Sanchez-Romero's Story

Ascension Saint Thomas Rutherford's Chaplain Keith Travis praises Nurse Tania Sanchez-Romero for her servitude and impact during one of the most memorable moments for this patient and their family.

"We had a critically ill patient on the 4th floor that was concerned about his mortality and his spiritual relationship with God. Throughout ongoing conversations with his family and his pastor, this patient felt that it was time to be baptized as an outward sign of his inward conversion. This patient's faith tradition teaches the importance of baptism by immersion."



Tania's creativity and problem-solving skills made this patient's hopes become a reality.

"After consultation, it was determined that we would be able to use the third-floor birthing pool as a vehicle for baptism. Tania went above and beyond the scope of her daily responsibilities to assist this patient, the patient's family and the patient's clergy to facilitate this baptism by transporting him to the 3rd floor and assisting the patient into and out of the pool with very little notice. Furthermore, Tania's insight and experience was instrumental in offering future guidance and policy recommendations for baptism procedures in the future."

2021 Guardian Angel Recipients

Dr. Ahmad Abu-Halimah
 Dr. Mark Akins
 Dr. Christopher Albergo
 Dr. Brady Allen
 Dr. Matthew Barrett (6)
 Dr. Robert Bass
 Janice Beard (3)
 Dr. Chris Beckman
 Dr. James Boerner* (3)
 Dr. Johann Brandes
 Deanna Bratcher
 Dr. Elizabeth Bray
 Dr. Jared Brock
 Dr. Olen Burns
 Dr. Angelo Canonico
 Dr. Dennis Carter
 Dr. James Carter
 Dr. David Chatman
 Dr. Priya Chaturvedi
 Dr. Brad Chesney
 Dr. Patrick Clark
 Dr. Kelly Davis
 Dr. Peter DiCorleto
 Dr. Edward Eastham
 Gordon Ferguson (3)
 Dr. Anna Fuller
 Dr. Russell Galloway (2)

Dr. Sherry Galloway (2)
 Dr. Roland Garretson
 Dr. Tammy Hackney
 Jennifer Harlan
 Art Hastings (4)
 John Hathaway
 Michelle Hawkins
 Stephanie Hayden
 Dulcie Hayes
 Dr. James Hayes (3)
 Elizabeth Hayslip
 Anabel Hobbs
 Dr. Ward Houck
 Dr. Anna Hristova
 Chad Jackson
 Dr. Dana Jones
 Dr. Michael Jordan
 Albert Kattine
 Dr. Lindsay Keith
 Dr. Diana Kooper (2)
 Dr. Warren Langworthy (2)
 Dr. Elizabeth LaRoche
 Dr. Paul LeDoux (2)
 Dr. Brain Lee (3)
 Dr. George Lien
 Dr. Libby Long
 Dr. Lisa Lowe

Dr. Yanjun Ma
 Dr. Simi Marwaha
 Dr. Joshua McCollum
 Dr. Jeremy McDuffie
 Kristopher Milland
 Dr. Guy Mioton (5)
 Deborah Moore
 Dr. Michael Moran
 Dr. Mary Moss (4)
 Dr. Max Moss
 Dr. Wayne Murphy
 Dr. Stephen Odom
 Stacy Palmer
 Dr. Utpal Patel
 Timothy Pogue
 Dr. James Poliner
 Dr. Tara Ralph
 Dr. Chandrashekhar Ramaiah
 Dr. David Ranz
 Dr. Edward Rhim
 Dr. Michelle Ridings
 Dr. Peter Robertson (2)
 Dr. Lucas Routh
 Dr. James Rungee (2)
 Kimberly Saar
 Tania Sanchez-Romero
 Dr. David Sellers

Dr. Kimberly Shannon
 Dr. Theodore Shepard (2)
 Dr. William Sherwood
 Dr. Matthew Standerwick
 Dr. Michael Stany
 Dr. Greg Stewart
 Dr. Warren Stribling
 Caitlin Teeters
 Hillary Ward
 Rowena Wedgeworth
 Dr. Charles Wendt (2)
 Michelle Wenisch
 Dr. Morris Westmoreland
 Dr. Lisa White (2)
 Dr. Charles Wolohon
 Sheila Wood
 Dr. Julian Yang
 Dr. John Zubkus



In Memory & Honor Of

January 2021 - June 2022

Drs. Galloway (10)

James Lea

Katherine May

Sydney Boerner

Dr. Boerner (16+46+19)

Art Hastings (4)

Vera Williams (2)

Thomas Swain

Jack Sherry (7)

Mary Probert

Marshall Gupton

Mary Jane Brown

Joyce Taylor

Roger Donegan

Jack and Emily Sant Amour

Christine Reed

Dave Davis

Blake Tidwell

Ingram Cope (7)

Rachel Campbell

Linda Gilley

Jonelle Prince

Dee O'Bannon

Claire Bush

Isabel Fox

Jean Hastings

Ralph Turley

David Singer (2)

Ebby Miller

Ed Miller

Joseph Marty (14)

James Hayes

Jerry Brenda (5)

Carl Buckner (4)

Doyle Lowe (2)

Dr. Saraswat (2)

Charlene and Ron Raylor

Fred Lovelace (2)

Evelyne Peery

James Thomas (3)

donor listing?

Growth pages - showing the building's growth over the years



Ascension Saint Thomas
Rutherford Foundation

rutherfordfoundation.org
615-396-4693
(social media)

1700 Medical Center Parkway
Murfreesboro, TN 37129